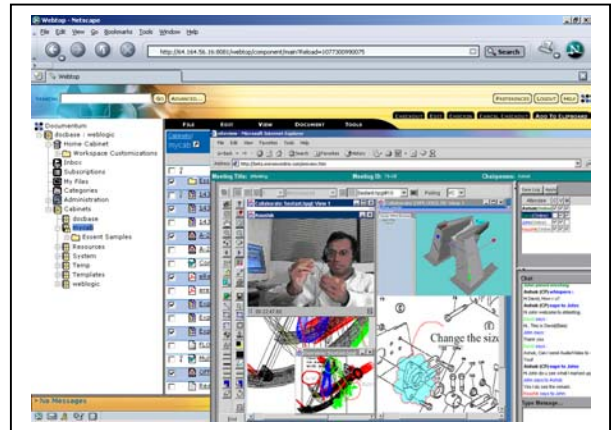




eReview™-Documentum-WebTop™ **Document Conferencing, View &** **Markup Integration**

Technical highlights



- WebTop login from within eReview interface-- two-way integration available. The users can conference, view and markup documents in real-time. eReview communicates with the Documentum objects securely and users can conference (real-time collaboration), asynchronously collaborate, view, markup, check-in/check-out and search the files/markups from within the same interface. This integration architecture utilizes a single repository and single user experience.
- Applies eReview capabilities when a WebTop user selects documents for various operations. eReview can also be used as a viewer to view files from WebTop's web interface.
- Cross platform, Server centric solution—runs on all flavors of UNIX, Windows, Sun-Solaris and Red-Hat LINUX and MAC-OS/X. True Web-based power with no applications, plug-ins or clients required. A true firewall-friendly environment for the Internet, intranets and extranets.
- Maintains relationships among eReview output, including revisions, redlining, and annotations without ever leaving the Documentum environment
- Implements Documentum policies for:
 - Login and data access
 - Information storage and management
 - Format and display of eReview items
 - Enterprise Content/Document Management
- Combination of Web-based view/ markup with collaboration and conferencing tools.
- Asynchronously review the content stored within Documentum, using Asynchronous mode, tightly integrated with the Workflow and QuickFlows modules of WebTop. The Asynchronous reviews can be instantly switched to real-time collaboration.
- All the review sessions can be recorded and saved back into Documentum databases as lightweight xml content. The saved sessions can also be played back, providing an audit trail of the document reviews.

eReview-Documentum WebTop Integration-Support for Real-time Document Conferencing and Collaboration

- Documentum-WebTop Login from within the eReview interface facilitates the users to login to the Documentum vaults enabling them to share, conference, view and markup documents in real-time. True Web-based, cross-platform, server-centric solution.
- Provides a true Multiple Document Interface (MDI). Open multiple documents or drawings in separate windows and collaborate on each individually/separately. Instant switching between real-time collaborative reviewing (synchronous collaboration/conferencing) and individual reviewing (asynchronous collaboration).
- Offers real-time sharing of documents, data as well as chat and whiteboard under one simple-to-use interface.
- Audio/Video conferencing tools within the same document-sharing environment to facilitate effortless audio/video communication.
- eReview also allows attendees in a collaborative meeting to share their desktops/applications remotely over http in a firewall friendly way.
- All events of the meetings can be saved and replayed back at any time for the ease of tracking. Different options to playback these saved “minutes of the meetings” with options to filter these recorded events. History saved as XML file, saving disk space on the servers.
- With this Document Conferencing, View and Markup Integration, eReview/Documentum users can Share and view/markup multiple documents from Documentum repository/document-vaults in real-time, login and log out of the WebTop environment, check-in and check-out markups redlines, annotations, store and print documents, work with metadata, search Documentum repositories.

Support for view & markup functions

Through transparent access to eReview capabilities, Documentum WebTop users can:

- Conference, share and view/markup 2D and 3D documents in the native formats of any of 200 engineering and business applications in real-time collaborative meetings. These real-time document review meetings/conferences can be started/joined through the WebTop interface. Two-way integration—manage documents/meetings from WebTop interface or login to Documentum document-vaults from eReview interface.
- Compare document revisions, either side-by-side or overlaid on one another (MDI).
- Print documents — that can include header, footer, and watermark data — on standard printers and plotters.
- Manipulate graphics with a combination of pan, zoom, flip, and rotate with viewing tools provided.
- Invite others to join the online collaborative sessions via emails.
- Mark up, redline, and annotate documents in the same document-sharing environment, work with multiple markup layers and files, consolidate markups into a single file, associate markups with specific revisions or control access to different levels of markup files
- Share the desktops and/or Applications from a remote location within the doc-sharing environment or work in multiple sessions simultaneously